

# Talladega County Profile

Alabama Department of Labor  
Labor Market Information Division

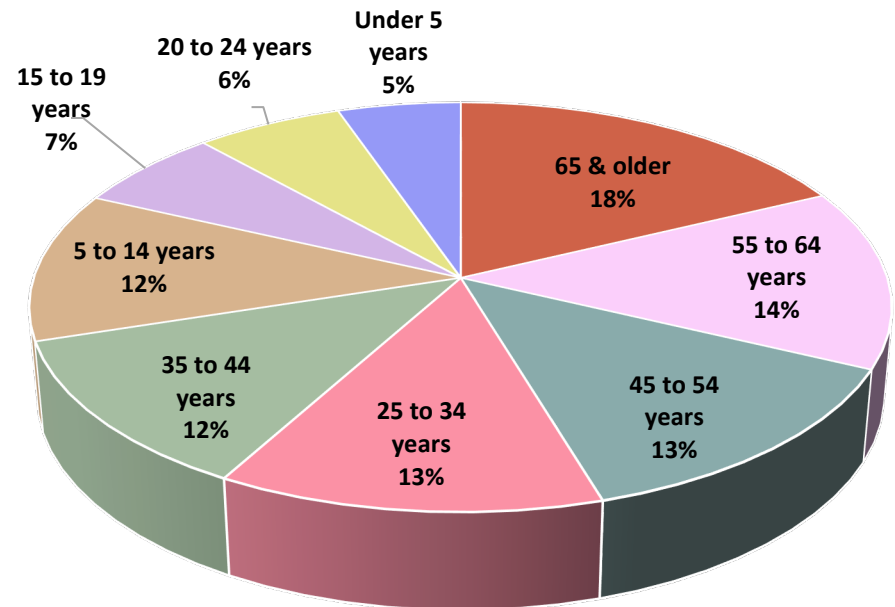
# Demographics

American Community Survey Average Population Estimates for 2017-2021

Age	Estimate
Under 5 years	4,326
5 to 14 years	9,697
15 to 19 years	5,273
20 to 24 years	5,191
25 to 34 years	10,381
35 to 44 years	9,845
45 to 54 years	10,884
55 to 64 years	11,650
65 and older	14,603

*Total Population*  
**81,850**

*Population By Age Group:*



# Demographics

## American Community Survey Average Population Estimates for 2017-2021

School Enrollment	Estimate
Population 3 years and over enrolled in school	18,067
Nursery school, preschool	889
Kindergarten	772
Elementary school (grades 1-8)	8,110
High school (grades 9-12)	4,287
College or graduate school	4,009
Educational Attainment	Estimate
Population 25 years and over	57,363
Less than 9 <sup>th</sup> grade	2,639
9 <sup>th</sup> to 12 <sup>th</sup> grade, no diploma	7,174
High school graduate (includes equivalency)	19,830
Some college, no degree	13,547
Associate's degree	5,035
Bachelor's degree	5,246
Graduate or professional degree	3,892

# Unemployment Data

## March 2023 Unemployment & Underemployment Data

County	Civilian Labor Force	Employment	Unemployment	Unemployment Rate	Under-Employment	Available Labor Pool
Calhoun	46,250	45,294	956	2.1%	8,742	9,698
Cherokee	11,517	11,291	226	2.0%	2,958	3,184
Clay	5,884	5,769	115	2.0%	952	1,067
Cleburne	6,050	5,939	111	1.8%	1,485	1,596
Etowah	38,906	38,054	852	2.2%	9,133	9,985
Randolph	9,387	9,205	182	1.9%	2,669	2,851
<b>Talladega</b>	<b>37,172</b>	<b>36,374</b>	<b>798</b>	<b>2.1%</b>	<b>9,094</b>	<b>9,892</b>

**Unemployment + Underemployment = Potential Available Labor Pool**

Source: LAUS data, County Unemployment Rates, Unemployment Data for Labor Force, Employment, Unemployment, and Unemployment Rate Data. Underemployment in Alabama WIA Areas, Published September 2022, CBER @ UA, Underemployment and Available Labor Pool Data.

# Unemployment Data

## Initial Claims by Occupation 2022, Annual

Occupation	Number Unemployed	Occupation	Number Unemployed
Helpers--Production Workers	285	Janitors and Cleaners, Except Maids and Housekeeping Cleaners	40
Team Assemblers	227	Heavy and Tractor-Trailer Truck Drivers	37
Production Workers, All Other	145	Carpenters	36
Cashiers	118	Packaging & Filling Machine Operators & Tenders	34
Inspectors, Testers, Sorters, Samplers, and Weighers	109	Maids and Housekeeping Cleaners	30
Construction Laborers	100	Supervisors of Production and Operating Workers	29
Stock Clerks and Order Fillers	95	Office Clerks, General	28
Customer Service Representatives	94	Operating Engineers and Other Construction Equipment Operators	27
Industrial Truck and Tractor Operators	79	Supervisors of Retail Sales Workers	25
Nursing Aides, Orderlies, and Attendants	72	Automotive Service Technicians and Mechanics	24
Retail Salespersons	67	Physicians and Surgeons, All Other	23
Sales Managers	58	Security Guards	21
Laborers and Freight, Stock, and Material Movers, Hand	57	Combined Food Prep and Serving Workers, Including Fast Food	20
General and Operations Managers	57	Cooks, Restaurant	20
Welders, Cutters, Solderers, and Brazers	56	Maintenance and Repair Workers, General	20



# Help Wanted OnLine<sup>®</sup> Annual Job Postings

## 2022 Top Occupations with Most Ads Posted

Occupation	# of Ads	Occupation	# of Ads
Registered Nurses	295	Sales Reps, Wholesale & Manufacturing, Excpt Technical & Scientific Products	98
Combined Food Prep & Serving Workers, Including Fast Food	223	Managers, All Other	95
Heavy and Tractor-Trailer Truck Drivers	223	Supervisors of Food Preparation and Serving Workers	93
Retail Salespersons	199	Secretaries and Administrative Assistants, Except Legal, Medical, and Executive	89
Janitors and Cleaners, Except Maids and Housekeeping Cleaners	191	Light Truck or Delivery Services Drivers	84
Supervisors of Retail Sales Workers	176	Licensed Practical & Vocational Nurses	83
Food Service Managers	156	Industrial Engineers	75
Customer Service Representatives	153	Stock Clerks and Order Fillers	73
Security Guards	140	Merchandise Displayers and Window Trimmers	69
Production Workers, All Other	125	Supervisors of Production and Operating Workers	68
Cashiers	123	Office Clerks, General	63
Maintenance and Repair Workers, General	112	Inspectors, Testers, Sorters, Samplers, and Weighers	62
Laborers and Freight, Stock, and Material Movers, Hand	104	Electrical Power-Line Installers and Repairers	61
Automotive Service Technicians and Mechanics	102	Bus and Truck Mechanics and Diesel Engine Specialists	59
General and Operations Managers	98	Industrial Engineering Technicians	59



# Expected Worker Shortfall

	2020-2030	2020-2035
Total Population Growth	1.0%	1.5%
Age 20-64 Population Growth	0.9%	1.2%
Nonagricultural Job Growth	13.1%	19.7%
Worker Shortfall	12.2%	18.5%
Worker Shortfall	3,777	5,742

Note: A negative Worker Shortfall indicates a projected surplus of workers versus available jobs.

# Occupational Wages

## Talladega County Average Hourly Wage All Occupations

Entry	Median	Mean	Experienced
\$11.96	\$20.08	\$22.89	\$28.36

## Talladega County Average Hourly Wage Manufacturing

Entry	Median	Mean	Experienced
\$16.49	\$23.78	\$26.76	\$31.90

Source: Alabama Department of Labor, Labor Market Information Division in cooperation with the U.S. Bureau of Labor Statistics. The data is based on the 2022 release of the Occupational Employment Statistics report, employment and wage estimate file. Wage data has been aged using the latest quarterly Employment Cost Index (ECI) factors. 'NA' indicates data not available for publication.



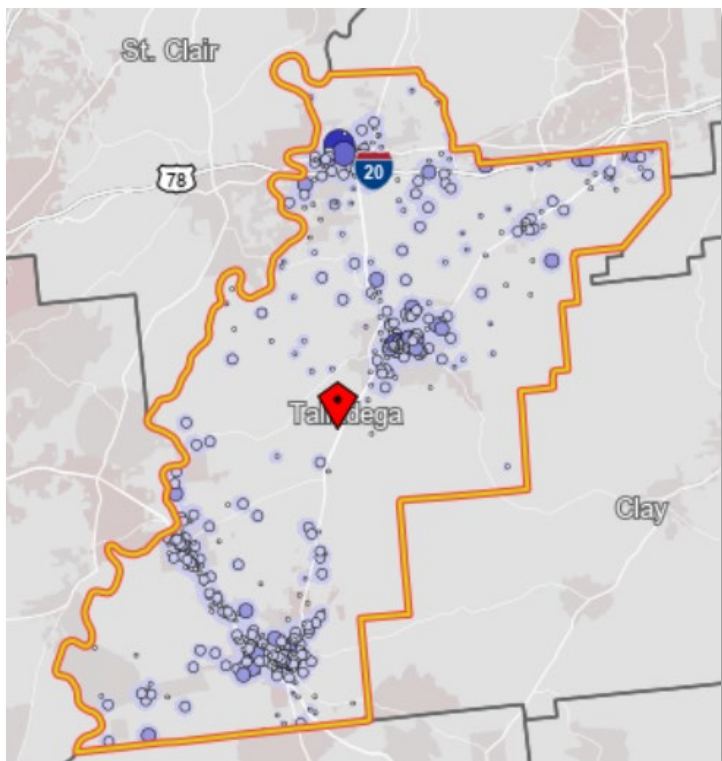
# Occupational Wages

## Annual Salary Area Comparison

	Entry	Median	Mean	Experienced
<b>Alabama</b>				
Total	\$25,238	\$40,258	\$53,066	\$66,979
Manufacturing	\$30,239	\$44,532	\$54,137	\$66,086
<b>Talladega County</b>				
Total	\$24,867	\$41,777	\$47,614	\$58,986
Manufacturing	\$34,280	\$49,462	\$55,664	\$66,356
<b>Calhoun County</b>				
Total	\$23,762	\$37,997	\$46,193	\$57,409
Manufacturing	\$31,868	\$45,150	\$51,081	\$60,687
<b>Jefferson County</b>				
Total	\$27,115	\$45,195	\$58,499	\$74,192
Manufacturing	\$32,924	\$47,282	\$54,218	\$64,864

Source: Alabama Department of Labor, Labor Market Information Division in cooperation with the U.S. Bureau of Labor Statistics. The data is based on the 2022 release of the Occupational Employment Statistics report, employment and wage estimate file. Wage data has been aged using the latest quarterly Employment Cost Index (ECI) factors. 'NA' indicates data not available for publication.

# 2020 Workforce Characteristics

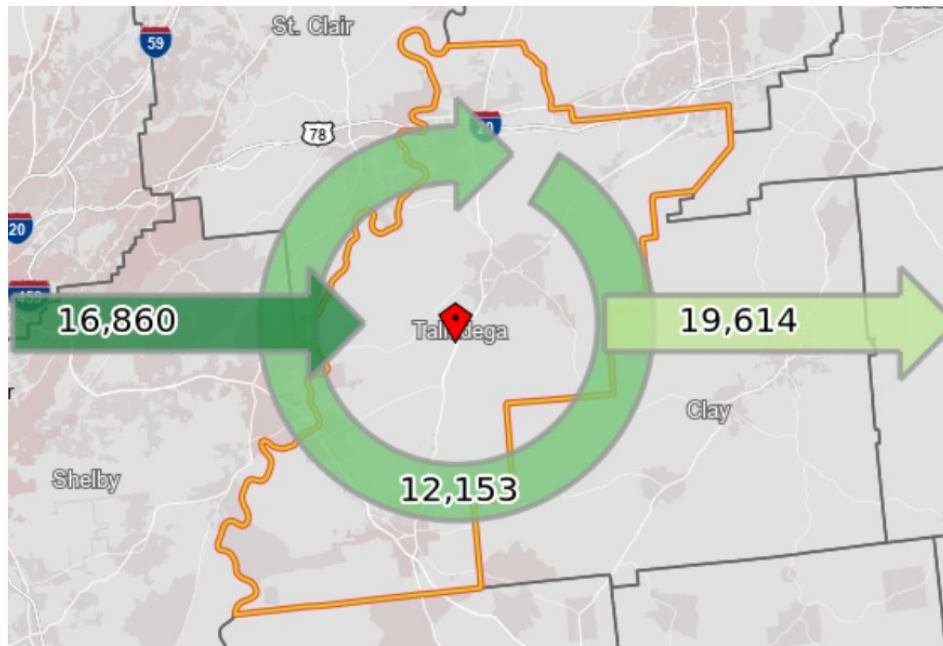


<b>Jobs by Worker Age</b>	<b>Count</b>	<b>Share</b>
Age 29 or younger	6,221	21.4%
Age 30 to 54	16,156	55.7%
Age 55 or older	6,636	22.9%
<b>Jobs by Worker Educational Attainment</b>	<b>Count</b>	<b>Share</b>
Less than high school	3,245	11.2%
High school or equivalent, no college	7,903	27.2%
Some college or Associate degree	7,425	25.6%
Bachelor's degree or advanced degree	4,219	14.5%
Educational attainment not available (workers aged 29 or younger)	6,221	21.4%
<b>Jobs by Worker Sex</b>	<b>Count</b>	<b>Share</b>
Male	16,521	56.9%
Female	12,492	43.1%
<b>Jobs by Earnings</b>	<b>Count</b>	<b>Share</b>
\$1,250 per month or less	5,505	19.0%
\$1,251 to \$3,333 per month	9,875	34.0%
More than \$3,333 per month	13,633	47.0%

Source: U.S. Census Bureau, OnTheMap Application and LEHD Origin-Destination Employment Statistics in Partnership with the Alabama Department of Labor, Labor Market Information Division.

# 2020 Commuting Patterns

## Labor Force Characteristics



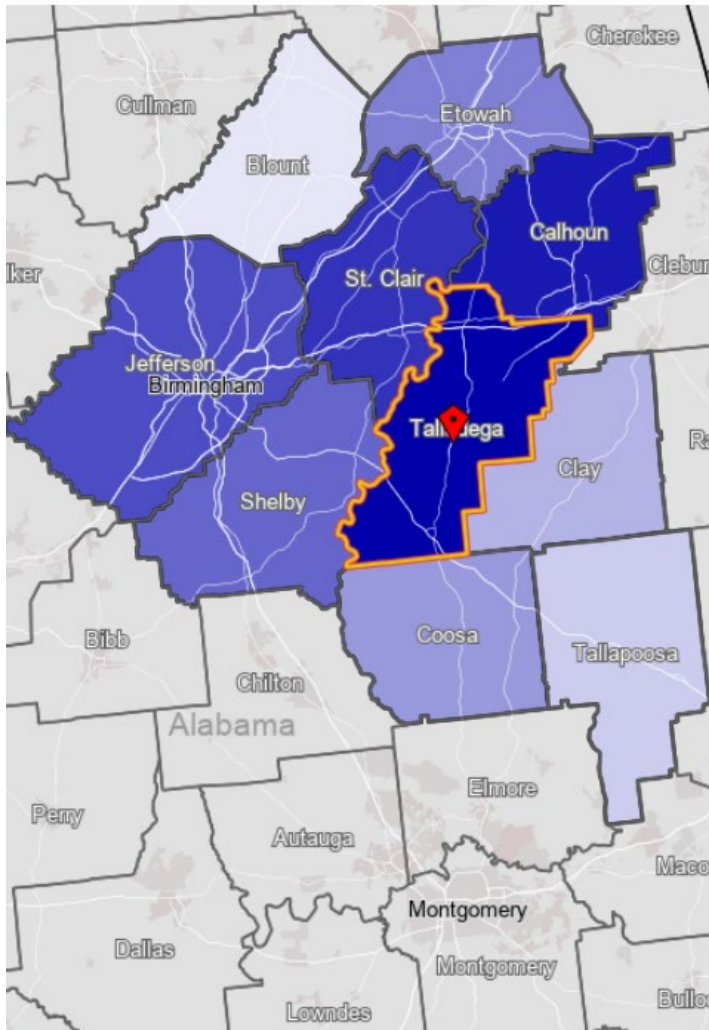
Outflow Job Characteristics	Count	Share
External Jobs Filled by Residents	19,614	100.0%
Workers Aged 29 or younger	5,116	26.1%
Workers Aged 30 to 54	10,306	52.5%
Workers Aged 55 or older	4,192	21.4%
Workers Earning \$1,250 per month or less	4,802	24.5%
Workers Earning \$1,251 to \$3,333 per month	7,293	37.2%
Workers Earning More than \$3,333 per month	7,519	38.3%
Workers in the "Goods Producing" Industry Class	4,447	22.7%
Workers in the "Trade, Transportation, and Utilities" Industry Class	4,580	23.4%
Workers in the "All Other Services" Industry Class	10,587	54.0%

**Live in the County  
but Work Elsewhere**  
61.7%

**Live and Work  
in the County**  
38.3%

# 2020 Commuting Patterns

## Where People Live who Work in This County



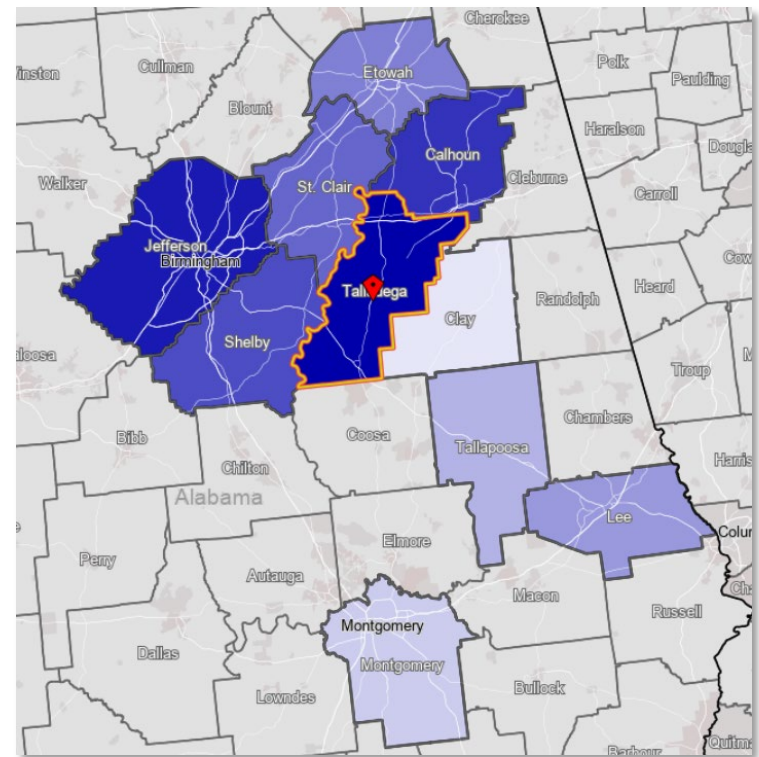
	Count	Share
Talladega County, AL	12,153	41.9%
Calhoun County, AL	3,926	13.5%
St. Clair County, AL	1,953	6.7%
Jefferson County, AL	1,705	5.9%
Shelby County, AL	1,391	4.8%
Etowah County, AL	1,174	4.0%
Coosa County, AL	655	2.3%
Clay County, AL	608	2.1%
Tallapoosa County, AL	560	1.9%
Blount County, AL	293	1.0%
All Other Locations	4,595	15.8%

Source: U.S. Census Bureau, OnTheMap Application and LEHD Origin-Destination Employment Statistics in Partnership with the Alabama Department of Labor, Labor Market Information Division.

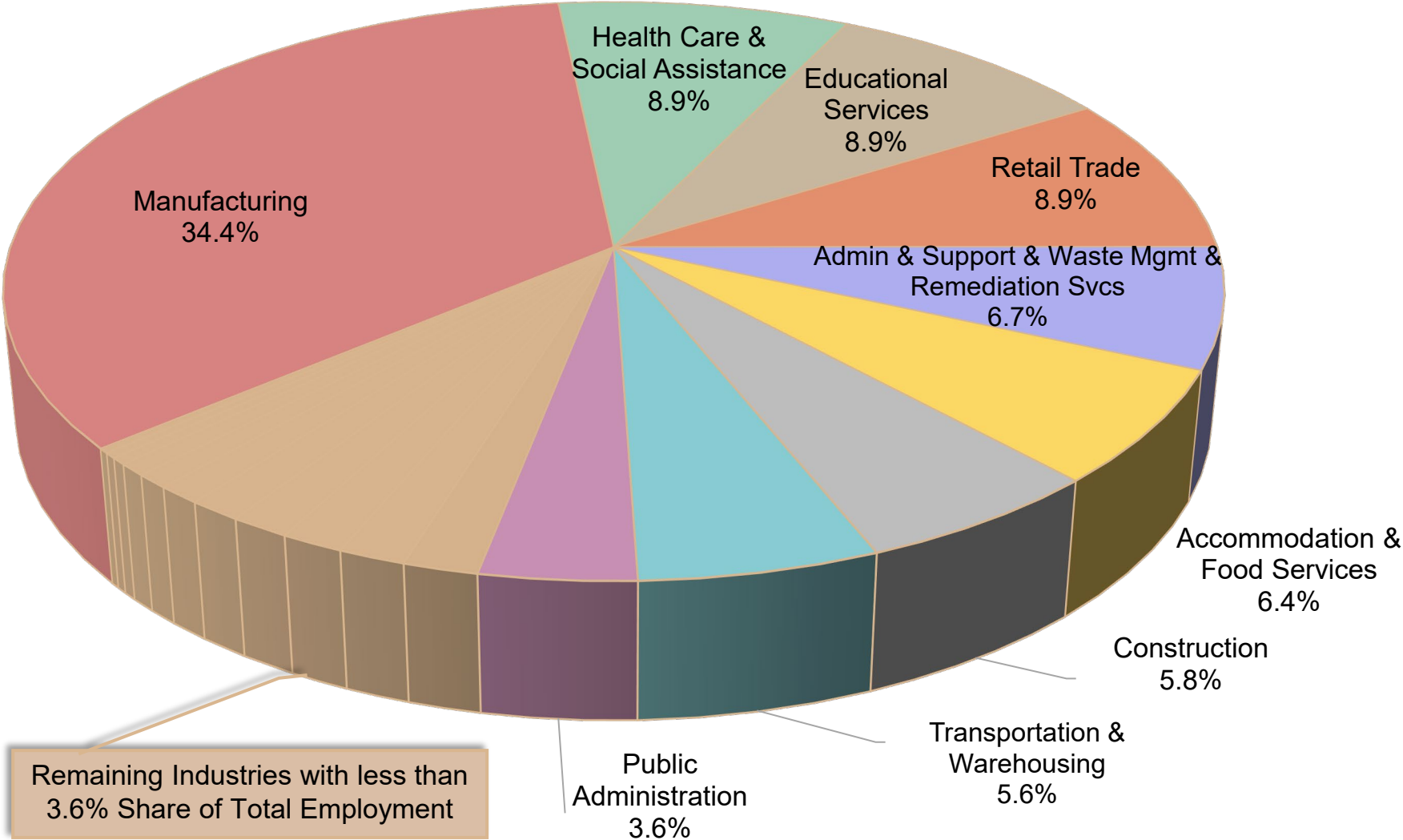
# 2020 Commuting Patterns

Where People Work who Live in This County

	Count	Share
Talladega County, AL	12,153	38.3%
Jefferson County, AL	4,770	15.0%
Calhoun County, AL	3,436	10.8%
Shelby County, AL	1,977	6.2%
St. Clair County, AL	1,507	4.7%
Etowah County, AL	577	1.8%
Lee County, AL	455	1.4%
Tallapoosa County, AL	423	1.3%
Montgomery County, AL	388	1.2%
Clay County, AL	363	1.1%
All Other Locations	5,718	18.0%

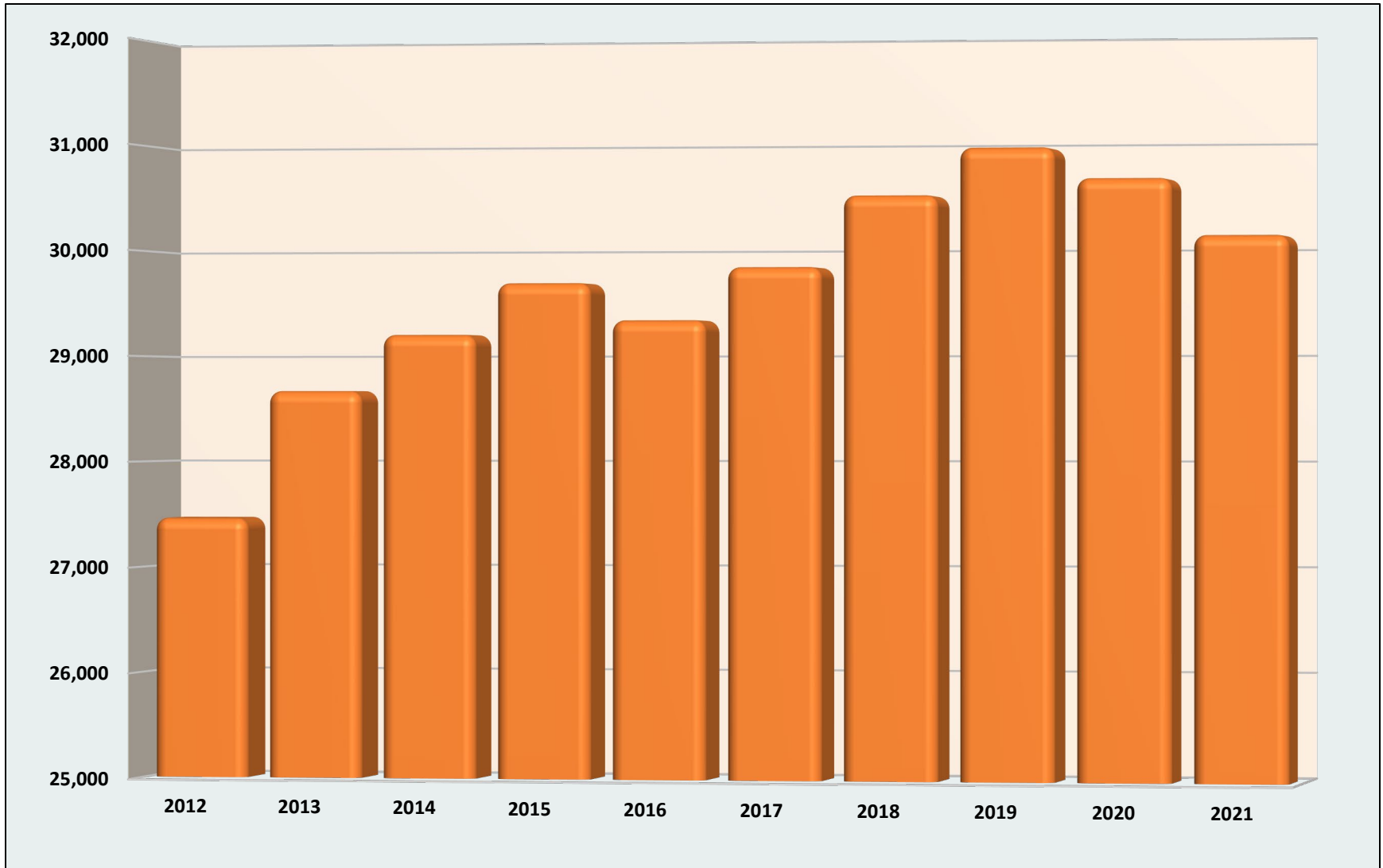


# Talladega County: Industry Distribution 2021



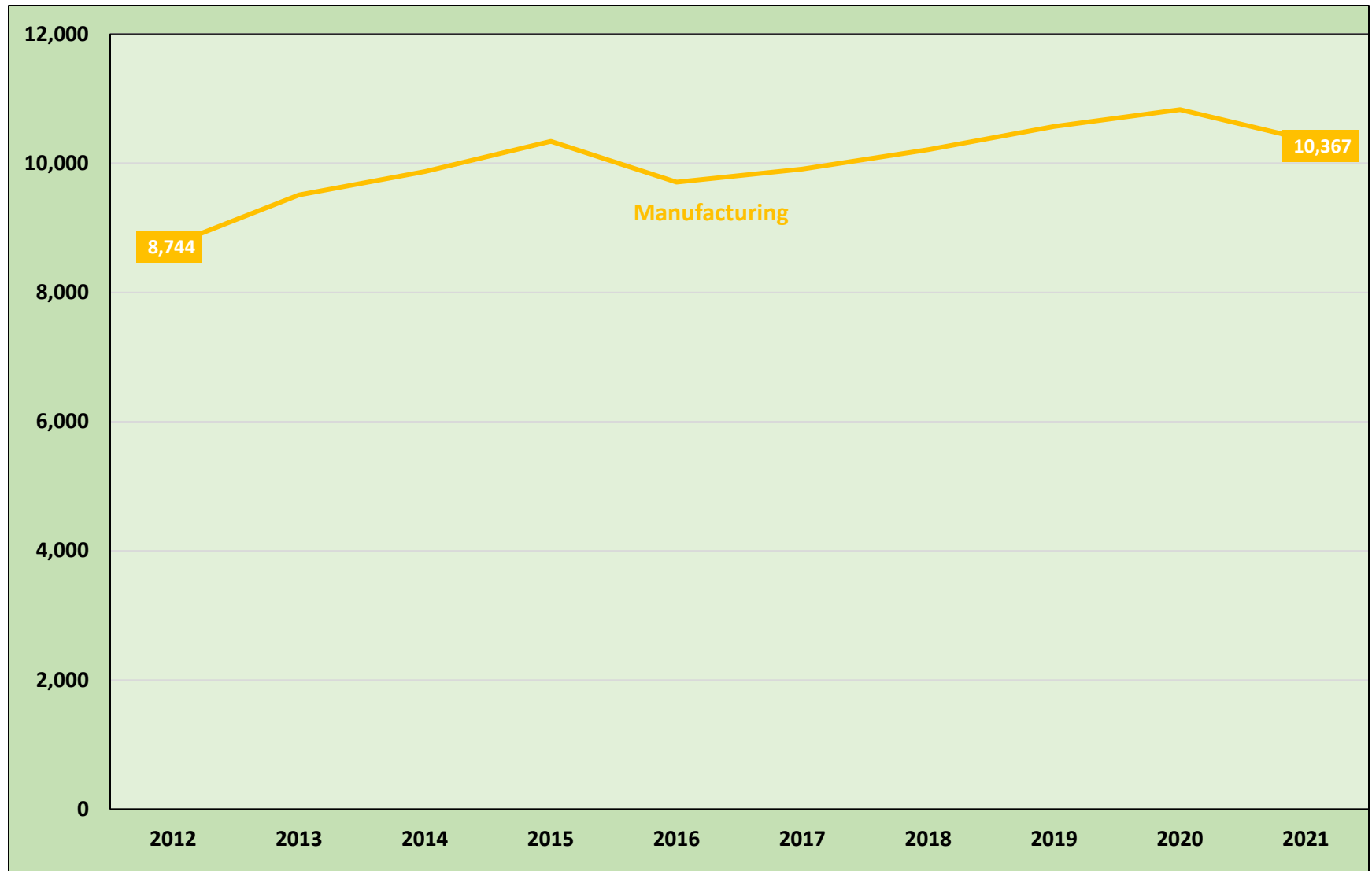
Source: Longitudinal Employer Household Dynamics program which is a partnership between the Census Bureau and the Alabama Department of Labor, Labor Market Information Division.

# Industry Total Employment Trend



Source: Longitudinal Employer Household Dynamics program which is a partnership between the Census Bureau and the Alabama Department of Labor, Labor Market Information Division.

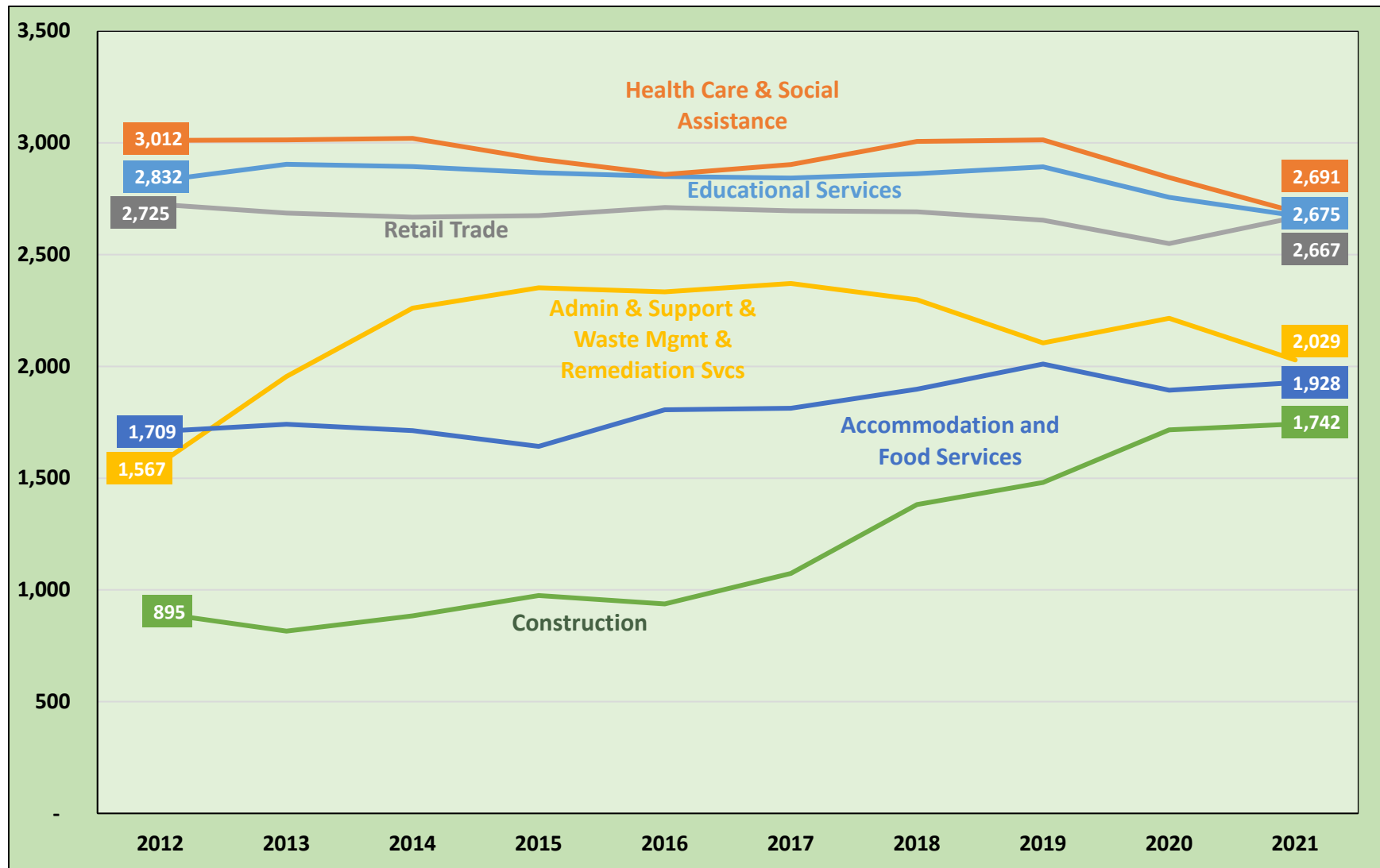
# Industry Sector Employment Trends



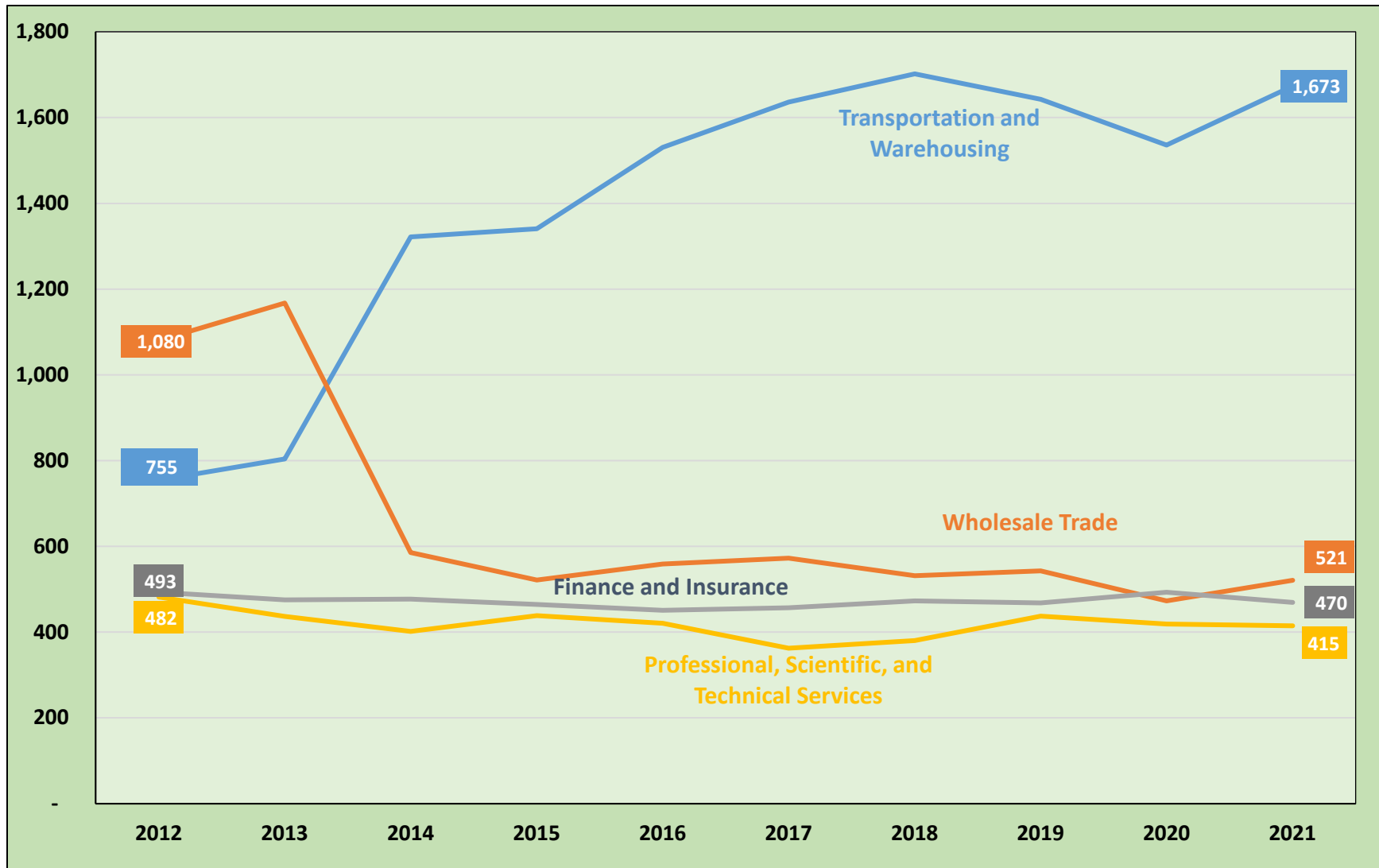
Source: Longitudinal Employer Household Dynamics program which is a partnership between the Census Bureau and the Alabama Department of Labor, Labor Market Information Division.



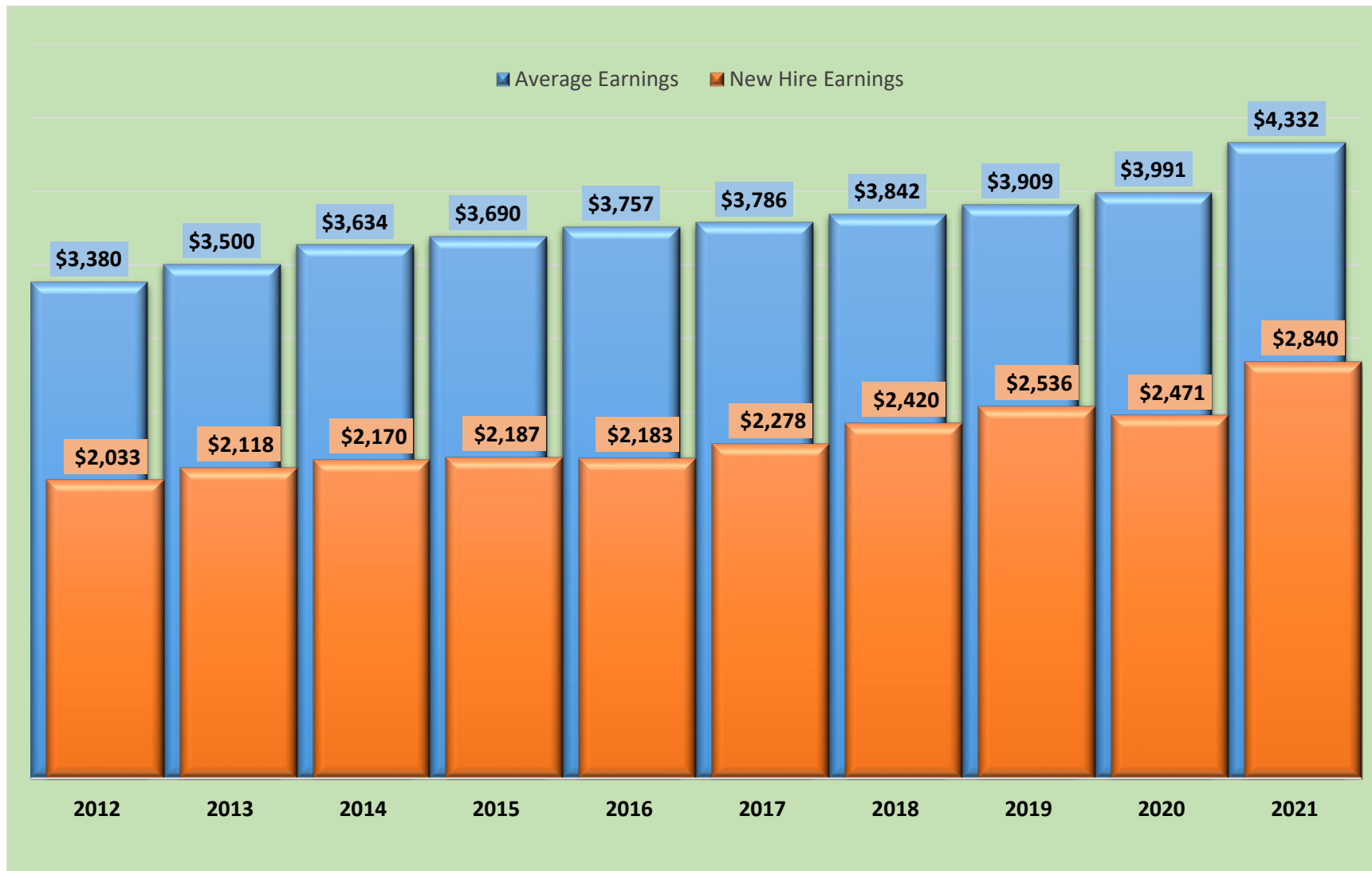
# Industry Sector Employment Trends



# Industry Sector Employment Trends



# Average Monthly Earnings Trend



# Postsecondary Education

## 2021-2022 HS Graduates Enrolled in Alabama Public Colleges

High School	HS Grads	Enrolled in AL Public Colleges	Enrolled in Remedial Course(s)				Enrollment Status	
			Math Only	English Only	Both	Total	Full Time	Part Time/Other
BB Comer Memorial High School	53	26	7	1	2	10	25	1
Childersburg High School	64	23	2	0	0	2	20	3
Fayetteville High School	44	17	2	0	1	3	14	3
Lincoln High School	128	59	5	2	1	8	51	8
Munford High School	100	44	2	2	3	7	42	2
Sylacauga High School	156	90	11	1	3	15	81	9
Talladega County Central High	17	8	2	0	0	2	7	1
Talladega High School	110	32	5	1	1	7	28	4
Winterboro High School	50	24	4	1	2	7	22	2



Source: Alabama Commission on Higher Education; 2022 High School Report.

# Postsecondary Education

## Fall 2022 Undergraduate Enrollment of Students Attending Alabama Public Two-Year and Four-Year Institutions

Talladega County		# Undergrads	# First-Time Freshman
<b>Major</b>	<b>Grand Total</b>	<b>1,973</b>	<b>406</b>
	Undeclared/NotReported	370	11
	General Studies	313	106
	Registered Nursing/Registered Nurse	185	24
	Business Administration and Management, General	95	38
	Computer and Information Sciences, General	50	11
	Psychology, General	48	12
	Liberal Arts and Sciences/Liberal Studies	39	16
	Biology/Biological Sciences, General	38	5
	Elementary Education and Teaching	38	10
	Multi-/Interdisciplinary Studies, Other	37	17
	Social Work	23	3
	Welding Technology/Welder	21	2
	Child Care and Support Services Management	19	9
	Administrative Assistant and Secretarial Science, General	17	0
	English Language and Literature, General	17	3

# Postsecondary Education

Summer 2021 thru Spring 2022 Completions of Students from Alabama Public Two-Year and Four-Year Institutions

Major	Less than 1 year	Less than 2 years	Associate	Less than 4 years	Bachelor	Post-Bachelor	Master	Post-Master	Doctoral	Talladega Total	* State Totals
General Studies	37	0	75	0	0	0	0	0	0	112	6,052
Registered Nursing/Registered Nurse	0	0	25	0	26	0	4	0	0	55	3,814
Welding Technology/Welder	23	10	0	0	0	0	0	0	0	33	1,136
Cosmetology/Cosmetologist, General	26	2	0	0	0	0	0	0	0	28	238
Business Administration and Management, General	3	0	1	0	15	0	4	0	0	23	2,201
Machine Shop Technology/Assistant	17	2	0	0	0	0	0	0	0	19	103
Elementary Education and Teaching	0	0	0	0	8	0	7	1	0	16	1,158
Industrial Mechanics and Maintenance Technology/Technician	6	2	6	0	0	0	0	0	0	14	793
Licensed Practical/Vocational Nurse Training	0	13	0	0	0	0	0	0	0	13	1,186
Social Work	0	0	0	0	8	0	4	0	0	12	729
Administrative Assistant and Secretarial Science, General	0	3	8	0	0	0	0	0	0	11	435
Liberal Arts and Sciences/Liberal Studies	0	0	5	0	6	0	0	0	0	11	1,089
Manufacturing Engineering Technology/Technician	8	0	3	0	0	0	0	0	0	11	677
Biology/Biological Sciences, General	0	0	0	0	9	0	1	0	0	10	715
English Language and Literature, General	0	0	0	0	9	0	1	0	0	10	292

# Questions???

Alabama Department of Labor  
Labor Market Information Division  
[LMI.LABOR@labor.Alabama.gov](mailto:LMI.LABOR@labor.Alabama.gov)

Phone (334) 956-7465